



MAHARISHI PEACE PALACE®

Be inspired · Be enlightened · Be here

Maharishi Peace Palace®

Booking Terms and Conditions for Residential Courses

To be read before making or submitting your booking.

Course Location:

Maharishi Peace Palace, Gardenia Close, Rendlesham, Suffolk IP12 2GX UK

MAKING A BOOKING: Please use the online booking form <http://tinyurl.com/PPOnlineBookingForm> unless it is indicated to book directly with the course office on +44 (0) 1394 421 136, email: courses@peacepalace.org.uk

COURSE FEES: <https://peacepalace.org.uk/wp-content/uploads/2018/12/Maharishi-Peace-Palace-Price-List-Current-REVISED-DEC-21-2018.pdf>

DEPOSIT: Secure with £75 deposit, balance to be paid by two weeks prior to the course.

CONFIRMATION: We will confirm your place as soon as we have processed your booking.

PAYMENT METHODS: All payments should preferably be by debit or credit card. If booking in person or by phone we can also arrange with you to accept cheques. We cannot accept cash.

- **Credit or Debit card by telephone call us on +44 (0) 1394 421 136**
- **Cheques** should be made payable to 'MEC Ltd' and either handed over in person to the course office or posted to us at the address below two weeks before the course start date
- **Bank transfers** are also possible – please enquire for the details

CANCELLATIONS, AMENDMENTS, REFUNDS AND NO SHOWS: Cancel any time up to two weeks before the course for a full refund. The deposit is non-refundable if cancelled within two weeks of the course. Refund of balance is possible up to 3 days prior to the start of the course. Within 3 days of the course commencement, no refunds will be given. This also applies to 'no shows'. You may amend/upgrade your booking at any time if such changes are possible as far as the course office is concerned. **REFUNDS for those who do not qualify:** If after submitting your booking and possibly paying, we discover from our side that you do not qualify to attend that particular course for any reason, we will refund you in full as soon as possible.

ARRIVAL: Registration, tea and welcome from 4 - 5pm; Rest, Meditation and/or TM-Sidhi programme 5 - 7 pm; Supper 7pm; First meeting 8pm. Your course Schedule will be awaiting you. This suggested arrival schedule allows time to rest and meditate before supper. You may consider taking the afternoon off work to ensure you can arrive early and miss the rush hour travel; however, we understand this is not always possible so it will be fine to arrive later if you have no other alternative

Please let us know in advance when you think you will arrive, and if things change during the journey we would also appreciate an update. Travel details are below.

DEPARTURE The course will end with afternoon tea 4.00 - 4.30pm on final day but additional overnight stays can be arranged, if required. **'COURSE EXTENSION B&B'** is available both the night before and/or after your course finishes. Do take advantage of this if you have the time, allowing you to travel back the following morning comfortably. This is the same price as our normal B&B but with an optional light supper included at no extra cost.

ACCOMMODATION: Bedrooms are provided in the Peace Palace on a first come first served basis with additional provision in the adjacent comfortable guest rooms of the residents of Maharishi Garden Village – all designed according to Vastu. All meals and everything else connected with the course happens in the Maharishi Peace Palace itself.

RELOCATION: No particular choice of bedroom can be guaranteed, although we will do all we can to give you the accommodation of your choice.

RESTRICTIONS: To enable us to keep a quiet and relaxing environment, children under 10 years are not permitted, and we ask that you kindly keep noise in corridors and rooms to a minimum. Smoking, alcohol, candles and incense are not allowed, and as our Peace Palace ethos is strictly vegetarian, no meat is allowed on the premises. No oil massage is permitted. We also reserve the right to ask guests/course participants to leave if their behaviour is deemed unacceptable.

ILLNESS during your stay: Although we hope you will remain in good health during your visit, should you by chance fall ill or discover you are ill during your stay and require assistance to arrange doctor or hospital visits or relocation to your home – reasonable additional charges will be levied based on costs involved including extra staff time, taxi fares etc. We reserve the right to ask you to return home should your illness be severe and possibly infectious, or your behaviour become incompatible with the settled ethos of the Peace Palace - and any costs incurred to achieve that will be borne by yourself. In all cases we reserve the right to ask you to leave if we feel it is appropriate and you would have to comply.

'B&B' Check-in is from 4.00pm and departure is by 10.00am. See [separate Relaxation B&B leaflet](#) about this great option for you, your family and friends to take a break in this Area of Outstanding Natural Beauty (AONB). Extra meals may be available – please enquire for availability. See separate document for House Rules applying.

CATERING: All participants can enjoy breakfast, lunch and supper in the Peace Palace plus refreshments (hot drinks) throughout the day. All catering is vegetarian and mainly organic with a set menu at each meal. Our acclaimed lunch and supper are normally served 'Buffet style' - and breakfast, usually quite simple, is 'Help Yourself' – a choice of toast, cereal, fruit, beverages etc. However, if staying for our 'Wellness B&B', the breakfast will be the same but there is a vegetarian continental breakfast available at a £10 supplement. Please remember that we tend to have a lighter meal in the evening and a more substantial one at lunchtime, which works with 'rounding'. You may need to consider this when planning your food for the day prior to arrival. Some people like to bring their own bottle of water, although this is a matter of personal choice as drinks are freely available including a bottle of mineral water in each room which can be refilled with filtered water in the dining room.

FOOD ALLERGIES: At every meal our regular vegetarian menu now includes gluten-free or dairy-free options for you to choose from. We do not charge extra for this. However, if this choice does not cover your needs then you may need to bring any additional vegetarian special food items with you to supplement your diet that you feel are essential; if you have a medical condition relating to your diet please call us to discuss and if we can help a small additional charge may apply. We do not allow meat in the Maharishi Peace Palace.

DISABLED ACCESS: There are facilities for the disabled including access ramps and a lift.

DAMAGE TO PROPERTY: All reasonable care should be taken with fixtures and fittings in the Peace Palace. Any unreasonable damage must be paid for.

CAR PARKING: Please park in the designated car parking spaces behind the building to the west unless instructed otherwise by the House Manager, Graham Scriven, or the course office. Be aware that the kerbs will be relatively high until the work is completed to raise the road surface to its final level.

GIFT VOUCHERS: Call us for details about our Course Gift Vouchers – a perfect present for friends and family.

DISCOUNTS: We offer discounts from time to time e.g. if you are a new Meditator within 12 months of your instruction in TM.

SCHOLARSHIP FUND: Support **could be** available for those on a low income for a proportion of the course fee for 2 - 3-day TM Retreats or the TM-Sidhi Course – **we welcome contributions to boost the scholarship fund.** Thank you.

TRAVEL BY TRAIN: Just over one and a half hours from London Liverpool Street station by train to Ipswich (taking the Norwich train and alighting at Ipswich to change onto the Lowestoft line for Melton station. To reach us approximately between 4.00pm and supper, if you are departing from London Liverpool Street, the quickest journey is achieved by taking the 14.00 or 17.30, arriving Ipswich 15.07 or 18.37 – you will then have about 10 minutes to change trains. The total journey time from Liverpool Street, doing it this way, is usually around 1hr 36 mins. It is always wise to check updated travel times online. Ideally consult Live Departure Boards on certain Apps.

TAXI FROM THE STATION: It is essential you book a local taxi well in advance of the day you intend to travel as this is a rural area with a high demand on taxis. It will then be waiting outside the station when you disembark. The station is very small (single line track) but does have a café opposite. We advise you booking the taxi well in advance All taxis should be paid for by yourself, so be sure to bring cash for the driver.

If you book a taxi and do not arrive when you have indicated, you will be responsible for paying for that taxi fare on top of any other you require as a replacement. If you are delayed for any reason, then you will need to telephone both us (01394 421 136) and the taxi company to alert us both to your changed estimated arrival time and to book a replacement local taxi.

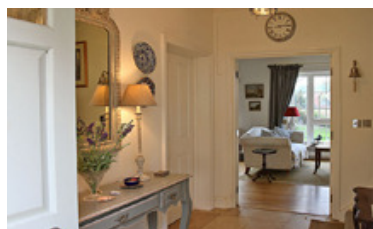
We recommend you book this as soon as you can, and you can always update them if there is any change to your arrival time. They are usually very good about letting you share a taxi with anyone else booked on the same train who is also travelling to the Peace Palace.

We use **Base Cars** from Rendlesham 01394 420716. At time of writing the transfer fee is approximately £10.00 and takes about 15 minutes. Alternatively, you can try M&R Cars taxi: 01394 386661.

TRAVEL BY CAR: You could try Google Maps Directions. **SAT NAV:** If you use Sat Nav, then it is sometimes best to put in Sycamore Drive IP12 2GF. Gardenia Close, IP12 2GX (or the adjacent Garden Square IP12 2GW) both lead off Sycamore Drive. Gardenia Close is the next turning after (or before) Garden Square depending on which direction you approach from.

VISITORS FROM OVERSEAS: We can arrange your airport transfer from London Stansted airport - call us to enquire. The current transfer rates are included in the separate document on prices and charges.

MAHARISHI GARDEN VILLAGE



The Maharishi Peace Palace is situated within Maharishi Garden Village, which is a unique development of 60 dwellings all designed according to the principles of Vastu - architecture in tune with Natural Law. Maharishi placed emphasis on the importance of living in such buildings, as we are profoundly affected by our built environment. Our courses provide an opportunity to experience Vastu living first-hand.

GENERAL:

1. We process your personal information in accordance with our Privacy Policy. Please take the time to read our Privacy Policy as it includes important terms which apply to you. By providing personal information in connection with a booking you consent to such processing on behalf of you and each guest staying with us under such booking.

2. Statutory Rights: As a consumer you have certain legal statutory rights. If any of these terms conflict with a statutory right or the law changes and your statutory rights change, then the statutory rights will prevail over these terms. For more information on your statutory rights see <https://www.gov.uk/consumer-protection-rights> or call 03454 04 05 06 or contact your local Citizens' Advice Bureau or Trading Standards office.

3. Events Beyond our Reasonable Control: We shall not be in breach of these terms or liable for any failure to perform any of our obligations in relation to your booking (such as the provision of room(s) and/or other products and/or services and/or extras) due to any adverse event, act, omission or accident which happens which is beyond our reasonable control including but not limited to flood, earthquake, extreme adverse weather conditions, natural

disasters, other acts of God, acts of terrorism, partial or full cancellation or delay of major public event, interruption or fire (except by way of our default) or failure of (except by way of our default) electric power, gas, water, or other utility service, plant machinery, computers, vehicles or any collapse of building structures.

4. Complaints, Questions and Disputes: If you wish to make a complaint or have a question regarding your booking please email us on courses@peacepalace.org.uk or phone 01394 421136 or mail us at The Peace Palace, Gardenia Close, Rendlesham, Suffolk IP12 2GX. We will respond to you as quickly as we can and normally within 5 working days.

5. Our Liability: a. We will not be liable for any losses which are not caused by either a breach of these terms by us, our non-compliance with our duties under applicable legislation or our negligence. We will also not be liable for any losses which were not foreseeable to both parties when the contract was formed. Loss is foreseeable if either it is obvious that it will happen or if, at the time the contract was made, both we and you knew it might happen - for example if you discussed it with us during the booking process.

b. We will not be liable in any circumstances for any loss or damage to vehicles you bring to the venue or any property left in them regardless of whether they are parked in a car park connected to the Peace Palace or not.

c. Nothing in these terms will exclude or limit our liability for fraud or death or personal injury caused by our negligence or any other matter which it would be illegal for us to (or to attempt to) exclude or limit.

6. Severability: If any provision in these terms is found to be illegal, invalid or unenforceable in whole or in part then the provision will apply with whatever deletion or modification is necessary so that the provision is legal, valid and enforceable. You and we intend that the legality, validity and enforceability of the remainder of these terms shall not be affected.

7. Waiver: Any failure by us to enforce our rights or remedies under these terms or otherwise or any delay in enforcing such rights or remedies shall not be construed as a waiver by us of those or any other rights or remedies.

8. Third Party Rights: This contract is between you and us. No other person shall have any rights to enforce any of its terms.

9. Law: These terms and any non-contractual obligations arising out of or in relation to these terms shall be governed by and will be interpreted in accordance with English law. All disputes arising out of or relating to these terms or any non-contractual obligations arising out of or relating to these terms shall be submitted to the non-exclusive jurisdiction of the English courts save that you agree that we retain the right to bring proceedings against you for breach of these terms in your country of residence or any other relevant country.

INFORMATION ABOUT US AND HOW TO CONTACT US: If you need to clarify anything please be in touch...




By email: courses@peacepalace.org.uk **By phone:** +44 (0) 1394 421 136 **By mail:** The Course Office, Maharishi Peace Palace, Rendlesham, Woodbridge, Suffolk IP12 2GX

PRIVACY POLICY: <https://peacepalace.org.uk/wp-content/uploads/2018/04/Peace-Palace-privacy-document-update-APRIL-2018.pdf>

Courses and programmes in the Maharishi Peace Palace® are offered by Maharishi Foundation®, registered educational charity 270157 (England & Wales), including Transcendental Meditation®, Advanced Techniques of Transcendental Meditation®, the TM-Sidhi Programme®, Maharishi® Vedic Vibration Technology, founded by Maharishi Mahesh Yogi®. The Peace Palace is run by Maharishi Education Centre Ltd. (MEC Ltd) who organise Peace Palace bookings. ©Maharishi Foundation 2019

Maharishi Peace Palace UK, Gardenia Close, Rendlesham, Woodbridge, Suffolk, IP12 2GX UK

courses@peacepalace.org.uk | T: +44 (0) 1394 421 136 | www.peacepalace.org.uk

 @peacepalaceUK  @maharishi_peace_palace_uk  @maharishi_PP_UK